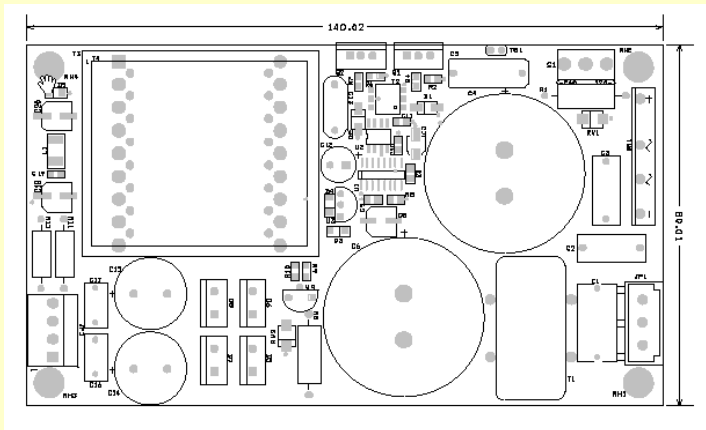


# DIGIAMPS.COM



## SMPS 500 - 500W switch-mode power supply (provisional info)



### SMPS 500 specs

Rated power	500W
Input voltage	115V AC / 230V AC
Output voltage	2 x 45V DC (*2)
Aux output voltage	15V DC
Operation	Half bridge smps
Max. output current	30A
EMC filter, input	yes
EMC filter, output	yes
Overtemp protect.	yes
Soft start	yes
Overcurrent protect.	yes
Dimensions	140 x 80 x 35mm
Heatsink	external (small)
Available as sample	oct 2005
Available as OEM design	yes

©2005 - all rights reserved - digiamps.com (a division of [CAD Audio dk](http://CAD Audio dk))

(\*2) other voltages upon request