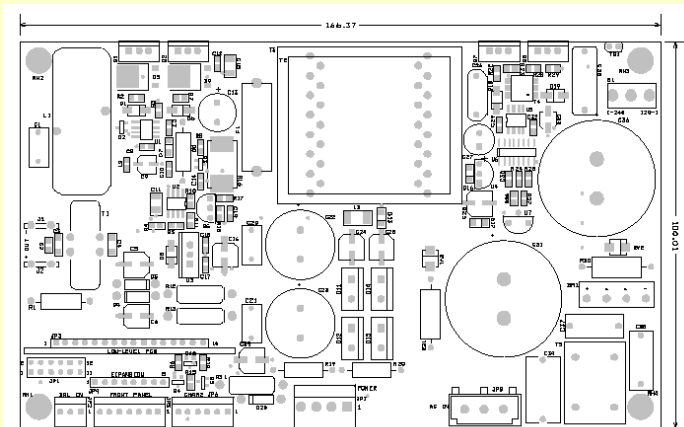


# DIGIAMPS.COM



## D250ASW PWM Amplifier + SMPS

(provisional info)



## D250ASW specs

Rated power 4 ohms	250W
Power supply max.	115V AC / 230V AC
Aux. supply	n.a.
Frequency range (+0, -1dB)	20 - 20.000 Hz
THD + N	0.02% typ.
Max. output current	20A
Min. load impedance	4 ohms (*1)
Input voltage	1V - 10 k - balanced
Operation	Half bridge amplifier
Plugin/expansion header	yes
Peak limiter	yes
Dimensions	166 x 100 x 35mm
Heatsink	external (small)
Available as sample	oct 2005
Available as OEM design	yes

©2005 - all rights reserved - digiamps.com (a division of [CAD Audio dk](#))