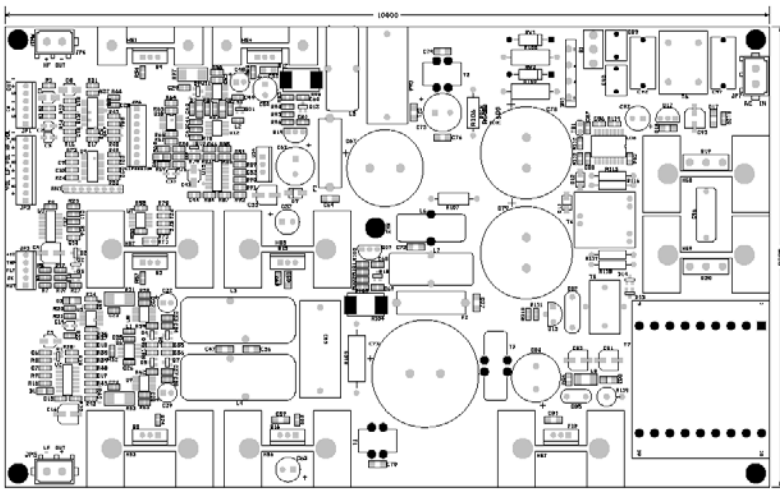


DIGIAMPS.COM



D1250ASW 2-CH PWM Amplifier + SMPS (provisional info)



D1250ASW specs

Rated power 4 ohms	1000W + 250W
Power supply max.	115V AC / 230V AC
Aux. supply	n.a.
Frequency range (+0, -1dB)	20 - 20.000 Hz
THD + N	0.05% typ.
Max. output current	40A
Min. load impedance	4 ohms (*1)
Input voltage	1V - 10 k - balanced
Operation	Full bridge amplifier
On-board crossover	yes
Peak limiter	yes
Dimensions	250 x 150 x 35mm
Heatsink	on-board
Available as sample	ask us
Available as OEM design	yes

©2005 - all rights reserved - digiamps.com (a division of CAD Audio dk)